

Subject
FALSE FLAGGING OF V6 CAMSHAFT TIMING DIAGNOSTIC TROUBLE CODES

Model: S-TYPE

Year: 1999 to 2001

VIN L00001 to M44997

Section: 303

Engine Systems

Sub-Section: 303-14

Electronic Engine Controls

Summary

S303-09: This Technical Bulletin has been issued due to customer complaints of the Malfunction Indicator Lamp (MIL) illuminating and Diagnostic Trouble Codes (DTCs) P1383 (valve cam timing over retarded bank 1) or P1388 (valve cam timing over retarded bank 2) logging. (On occasions both codes are shown)

Action

To eliminate the false flagging of DTCs P1383 and P1388, the Powertrain Control Module (PCM) should be re-programmed using release JTP759/11 of the WDS disc.

Note: The PCM is reflected as ECM when using WDS.

When a technician enters the ECM re-configuration section they will be prompted to determine the engine serial number of the vehicle. If the first six digits of the engine number are outside the specified serial number range (103981*** to 127908***) they will be allowed through to re-calibrate the vehicle ECM with a standard set of calibrations. If the engine serial number falls within the given range the system will automatically divert to a more aggressive set of calibrations.

On a customer complaint basis only, follow the workshop procedure outlined below.

Workshop Procedure

Note: Vehicle may need to be positioned on a lift, as the engine number will need to be read during re-configuration.

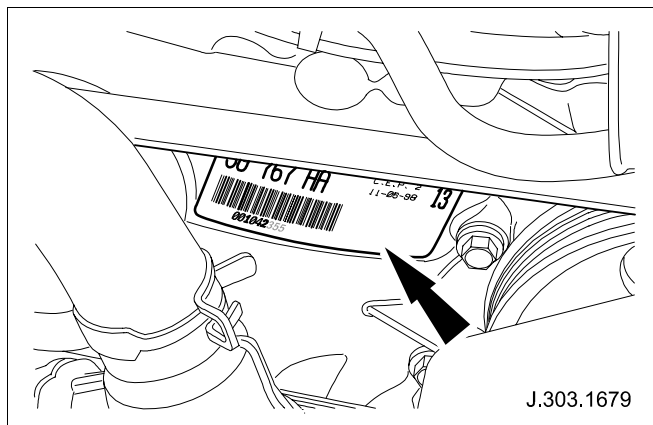


Fig. 1

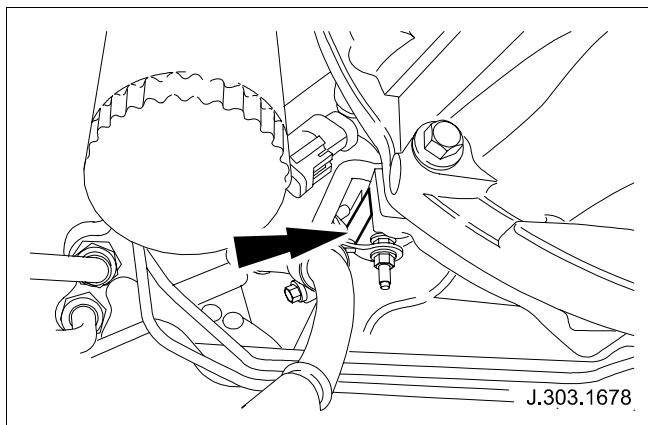


Fig. 2

Note: The engine number may be found on the BAR Code label on the engine front cover (see Fig. 1) or on the left-hand side of the engine sandwich plate (see Fig. 2).

- 1 Open hood and fit fender protector covers.

Note: With WDS already loaded with software JTP 759/11.

- 2 Position WDS alongside vehicle, switch 'ON' Portable Test Unit (PTU) and allow software to load.
- 3 Connect PTU to vehicle via diagnostic cable.
- 4 Enter vehicle VIN number and navigate to content model screen, select engine system, and then go to DTC monitor.
- 5 Read engine DTCs, if any stored clear from memory.

Note: If any OBD codes stored, find fault and carry out separate Warranty claim.

- 6 Navigate to configuration main menu; select and run 're-configure existing ECM'.

Note: While WDS is re-programming PCM, fit Generic label (JJM 998499/20) alongside the Pecus label in the boot with revised part number (from table below), and date of re-configuration added to label. (See Fig. 3)

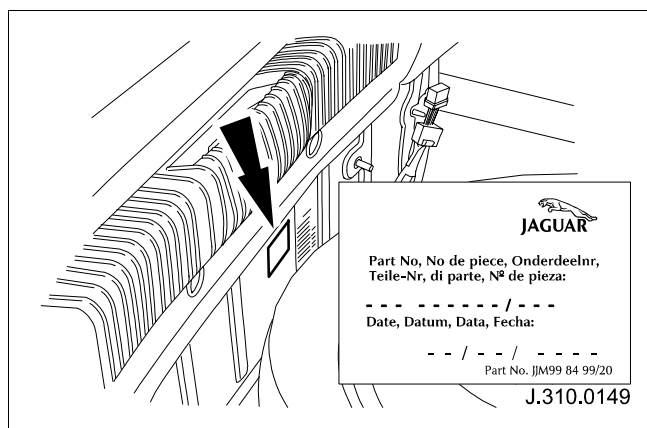


Fig. 3

- 7 After reprogram of ECM complete, switch 'OFF' PTU, disconnect and return WDS to original location.
- 8 Remove fender protector covers and close hood.

ECM Part Numbers:

VIN L00001 to L86901:

Manual/Auto	Engine	Market	Calibration Type (file to be selected)	New Part Number
Auto	3.0L V6	UK and Europe	XDAF2CX	XR8A 12A650 NCH
			XDAF2CZ	XR8A 12A650 NCG
Manual	3.0L V6	UK and Europe	XLAF2G4	XR8A 12A650 QGG
			XLAF2G5	XR8A 12A650 QGF
Auto	3.0L V6	North America	XDAF2B9	XR8A 12A650 NBJ
			XDAF2B1	XR8A 12A650 NBH
Auto	3.0L V6	Egypt and South Africa	XDAF2D8	XR8A 12A650 NDH
			XDAF2D5	XR8A 12A650 NDG
Auto	3.0L V6	Egypt and South Africa	XLAF2F8	XR8A 12A650 QFF
			XLAF2F5	XR8A 12A650 QFE
Auto	3.0L V6	Leaded Fuels Only	XDAF2A8	XR8A 12A650 NAH
			XDAF2A5	XR8A 12A650 NAG
Auto	3.0L V6	Thailand Only	XDAF2M8	XR8A 12A650 NMH
			XDAF2M5	XR8A 12A650 NMG
Manual	3.0L V6	Thailand Only	XLAF2N8	XR8A 12A650 QNF
			XLAF2N5	XR8A 12A650 QNE
Auto	3.0L V6	Brazil Only	XDAF2E8	XR8A 12A650 NEG
			XDAF2E5	XR8A 12A650 NEF

VIN L86902 to M44997:

Manual/Auto	Engine	Market	Calibration Type (file to be selected)	New Part Number
Auto	3.0L V6	UK and Europe	XDAF2C4	1R8A 12A650 DCE
			XDAF2C8	1R8A 12A650 DCD
Manual	3.0L V6	UK and Europe	XLAF2G2	1R8A 12A650 FGF
			XLAF2G1	1R8A 12A650 FGE
Auto	3.0L V6	North America	XDAF2BZ	1R8A 12A650 DBF
			XDAF2B2	1R8A 12A650 DBE
Auto	3.0L V6	Egypt, South Africa and South Korea	XDAF2D1	1R8A 12A650 DDE
			XDAF2D6	1R8A 12A650 DDD
Manual	3.0L V6	Egypt, South Africa and South Korea	XLAF2F1	1R8A 12A650 FFE
			XLAF2F6	1R8A 12A650 FFD
Auto	3.0L V6	Leaded Fuels Only	XDAF2A1	1R8A 12A650 DAE
			XDAF2A6	1R8A 12A650 DAD
Auto	3.0L V6	Thailand Only	XDAF2M1	1R8A 12A650 DME
			XDAF2M6	1R8A 12A650 DMD
Auto	3.0L V6	Brazil Only	XDAF2E1	1R8A 12A650 DEE
			XDAF2E6	1R8A 12A650 DED
Auto	3.0L V6	Mexico	XDAF2SZ	1R8A 12A650 GSE
			XDAF2S6	1R8A 12A650 GSD
Auto	3.0L V6	Australia, Argentina, Chile, China, Indonesia, Malaysia, New Zealand, Singapore, Sri Lanka, Taiwan, Abu Dhabi, Bahrain, China, Dubai, Jordan, Kuwait, Lebanon, Oman, Qatar, Saudi Arabia and Syria	XDAF2P1	1R8A 12A650 DPE
			XDAF2P6	1R8A 12A650 DPD
Manual	3.0L V6	Australia and New Zealand	XLAF2Q1	1R8A 12A650 FQE
			XLAF2Q6	1R8A 12A650 FQD

Warranty Information

Description	SRO	Labor Time Allowance	Warranty Code
V6 Camshaft timing issue - service fix	86 92 93	0.5 Hours	BX-DB-42

Parts Information

The following parts must be ordered via Jaguar Cars Parts Operations.

Description	Part Number	Quantity
Generic label	JJM 998499/20	1